

After Planting Care



Watering

Water the tree deeply once per week during the first growing season.

Pruning the New Tree

Remove broken, crossing, or diseased branches only.

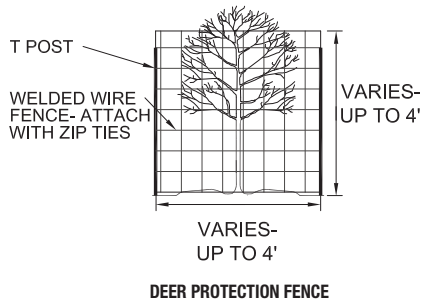
Staking Trees

Stake trees only when they are top-heavy or planted in windy areas. Do not stake the tree tightly. Always allow for sway. Remove staking materials after two years, at most.

Trunk Protection

Protect your tree from deer, if needed. Effective fencing includes tree tubes or a woven wire fence.

Protect your tree from lawnmowers and weed-eater damage.



Tree Planting & Care Guide

EVERYTHING TO KNOW TO GET YOUR TREE OFF TO A GOOD START

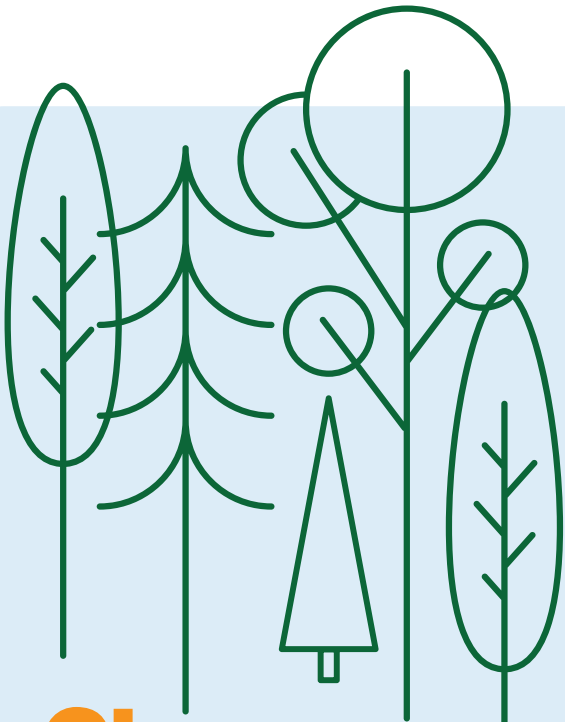
For more information:

Tree Planting Instructions Howard County Recreation & Park
<https://www.youtube.com/watch?v=atFwgyrJmnl>

Deer Resistant Native Plants
<https://extension.umd.edu/resource/deer-resistant-native-plants>

Why Native Plants Matter
<https://www.audubon.org/content/why-native-plants-matter>

Tree Owner's Manual
https://www.fs.usda.gov/Internet/FSE_DOCUMENTS/stelprdb5368392.pdf



Choose the Right Tree for Your Yard

Do you have room for a large tree or a small tree?

Consider the ultimate size of the tree.

Is your yard mostly sunny or mostly shady?

Understory species are best for shady yards.

Is the soil well-drained or soggy after storms?

Soggy soil is not ideal for most species, but some can handle occasional flooding (examples: river birch, red maple).



Where to Plant Your Tree

DISTANCE FROM BUILDING WALLS AND OTHER TREES

- Small trees (up to 30' tall): 10' minimum (15'+ preferred)
- Medium trees (30-60' tall): 25' minimum (30'+ preferred)
- Large trees (60' tall+): 30' minimum (35'+ preferred)
- In naturalized or forested areas closer spacing is okay.

DISTANCE FROM PAVEMENT

Where possible, plant 5' minimum (10'+ preferred) from sidewalks, driveways, or other pavements to avoid pavement damage and issues with low branches.

DISTANCE FROM PROPERTY LINES

Consider your neighbors. Plant 5' minimum (10'+ preferred) from your property line. If possible, plant medium and large trees at least 30' from a neighbor's house.

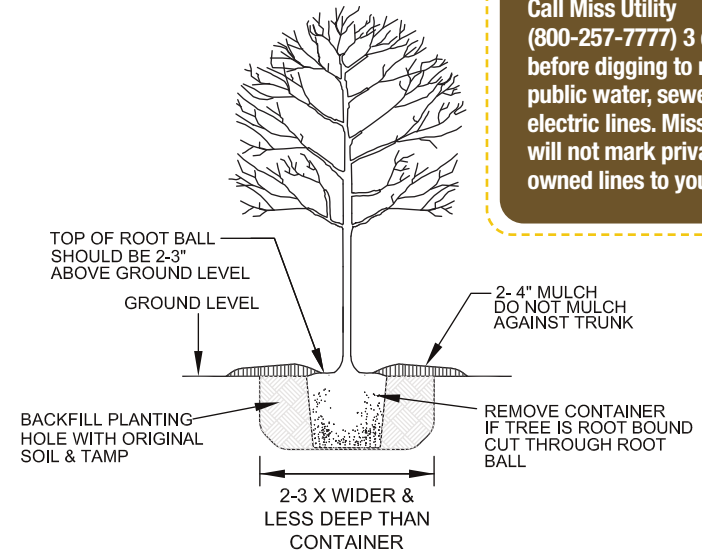


Where not to Plant Your Tree

- NOT** in septic fields: roots can damage septic systems
- NOT** under overhead lines – except small trees (up to 25')
- NOT** where standing water is common – except tolerant trees
- NOT** over public water, sewer, and electric lines



Call Miss Utility (800-257-7777) 3 days before digging to mark public water, sewer, and electric lines. Miss Utility will not mark privately owned lines to your home.



How to Plant Your Containerized Tree

If the tree is root-bound, cut through the roots on the bottom of the root ball and along the sides with a sharp knife.

If roots are circling around the root ball, cut off the circling roots to prevent girdling.

Water the tree after planting with at least 3 gallons of water.