

# Howard County Draft Green Infrastructure Network Plan

January 18, 2012

# Draft Green Infrastructure Network

- Purpose and Definitions
- Mapping Criteria
- The Draft Network
- Protection and Enhancement Tools
- Next Steps
- Discussion



Photo Courtesy Sue Muller

# Green Infrastructure

- An interconnected network of waterways, wetlands, woodlands and other natural areas
- Includes parks, open space and other protected lands
- Provides habitat for native and migratory species
- Helps protect air and water quality
- Contributes to the health and quality of life of our communities



# Draft Green Infrastructure Network

- Purpose
  - To define, protect and enhance a green infrastructure network that includes and links the most ecologically significant natural areas in Howard County
  - To use this network as a basis for planning and setting natural resource protection priorities
- Network comprised of Hubs and Corridors
  - Hubs - large natural areas (interior forests and wetlands) that provide valuable habitat for wildlife
  - Corridors - the linear features that tie the hubs together

# Forest Interior Habitat

- Forest located 300 feet from the forest edge
- Higher quality habitat with closed canopy and cool, moist growing conditions
- Supports forest interior dwelling bird species and other native and migratory species
- Forest patches of 50 acres with at least 10 acres of forest interior can provide valuable habitat



# Maryland Green Infrastructure

- Hubs

- Interior forests and wetlands of 250 acres or larger
- Other important habitat of at least 100 acres
- Protected lands that contain these habitats

- Corridors

- 1,100 feet wide
- Follow best ecological route



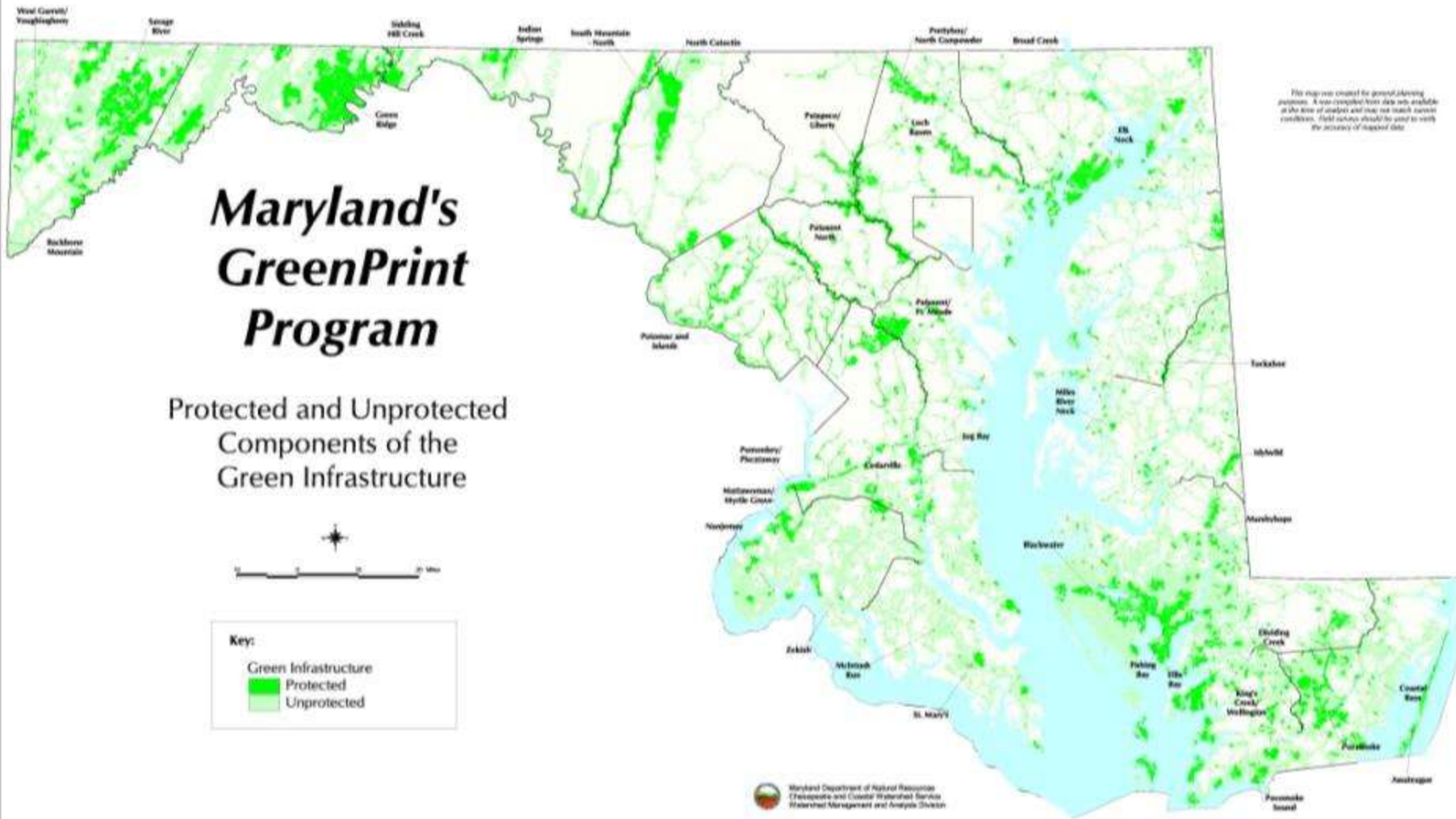
# Maryland's GreenPrint Program

Protected and Unprotected  
Components of the  
Green Infrastructure

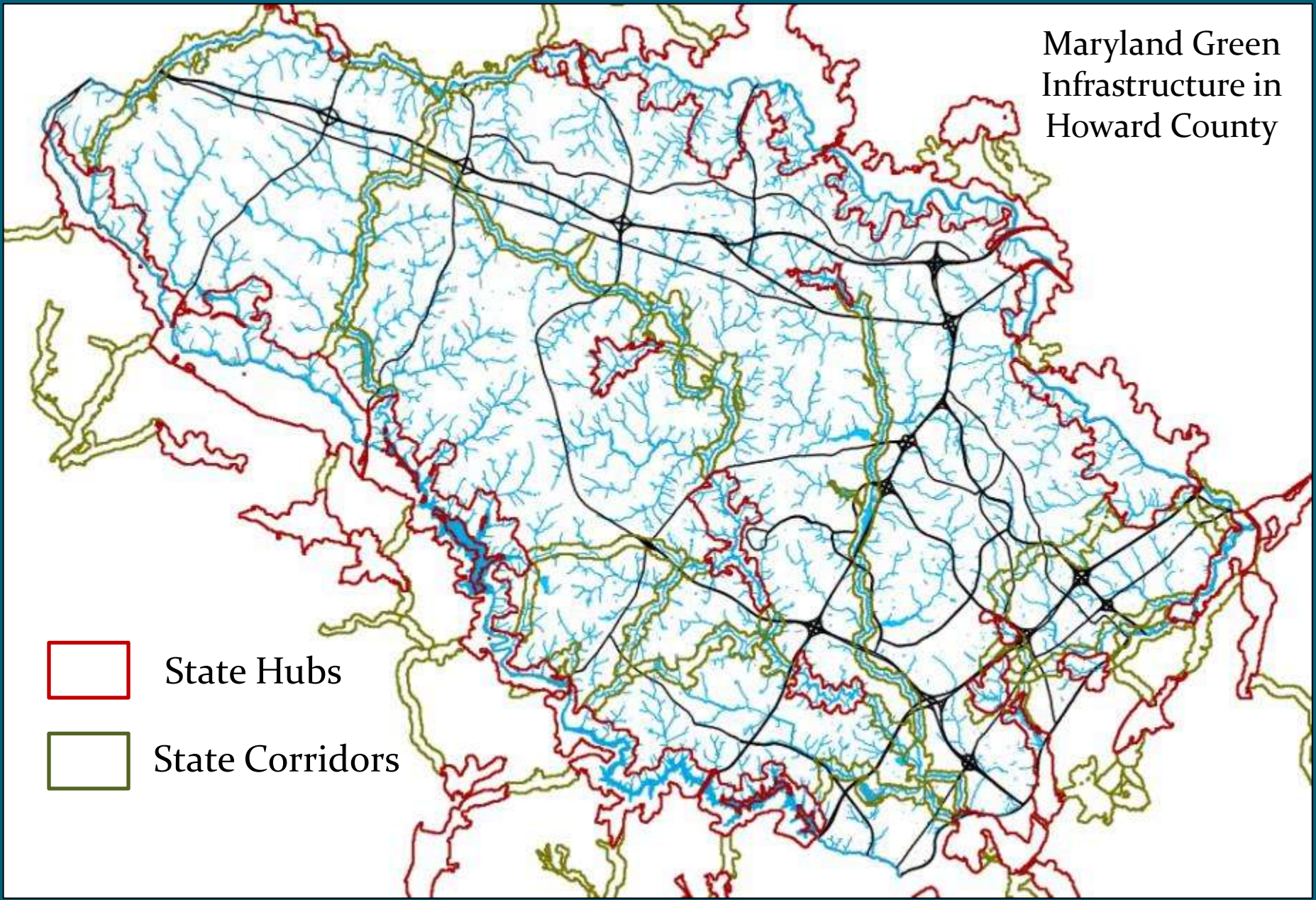


Key:

Green Infrastructure  
Protected  
Unprotected



# Maryland Green Infrastructure in Howard County



State Hubs

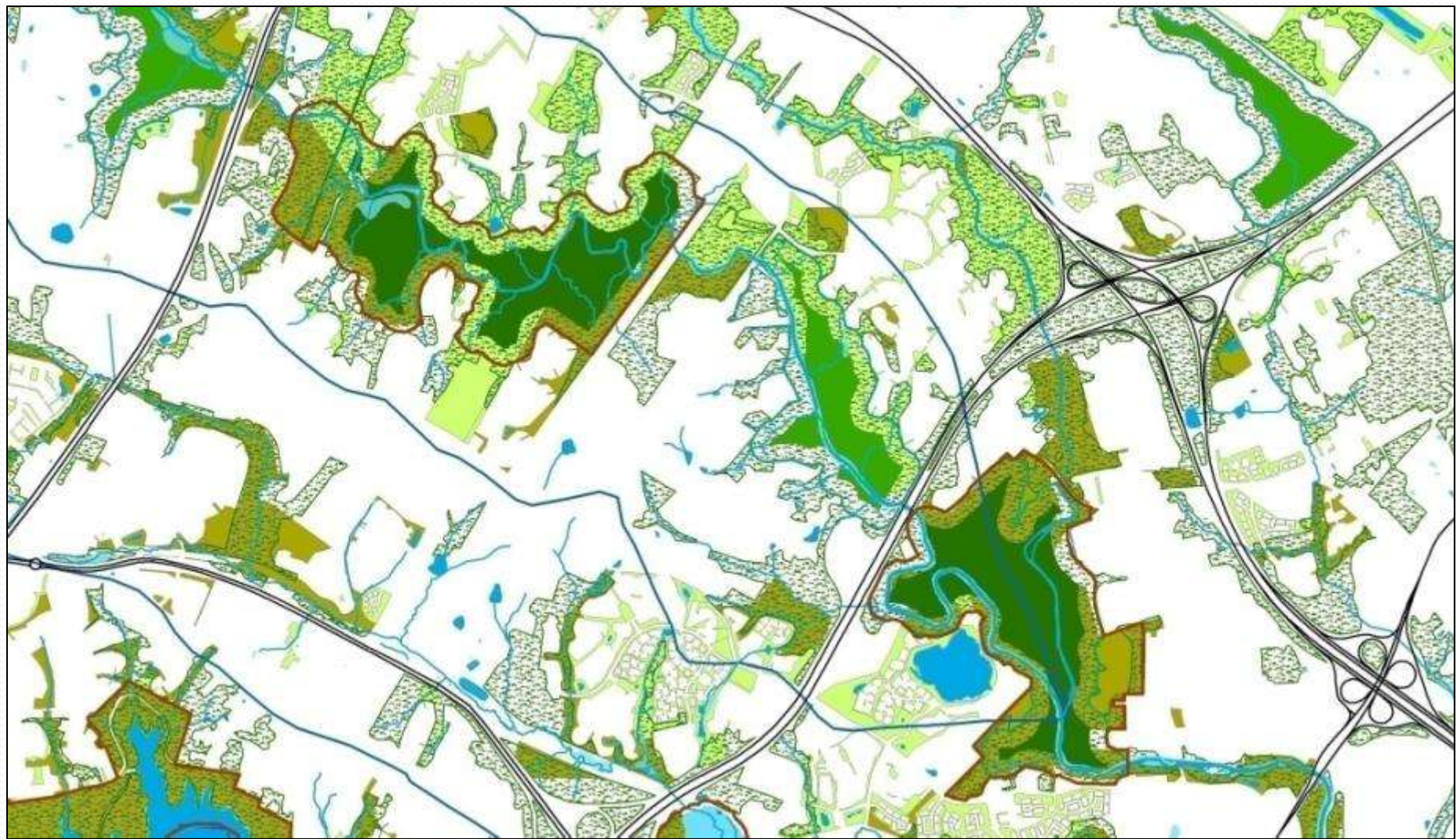


State Corridors

# Howard County Mapping Criteria

Resource	Tier One Hubs	Tier Two Hubs	Tier Three Hubs
Interior Forest	75 acres or more	50 acres or more	Adjacent forest
Wetlands	50 acres or more	25 acres or more	Adjacent wetlands
Park & Open Space	State & County	County, HOA & CA	Adjacent Park & Open Space

- Corridors have 300 and 500 foot widths



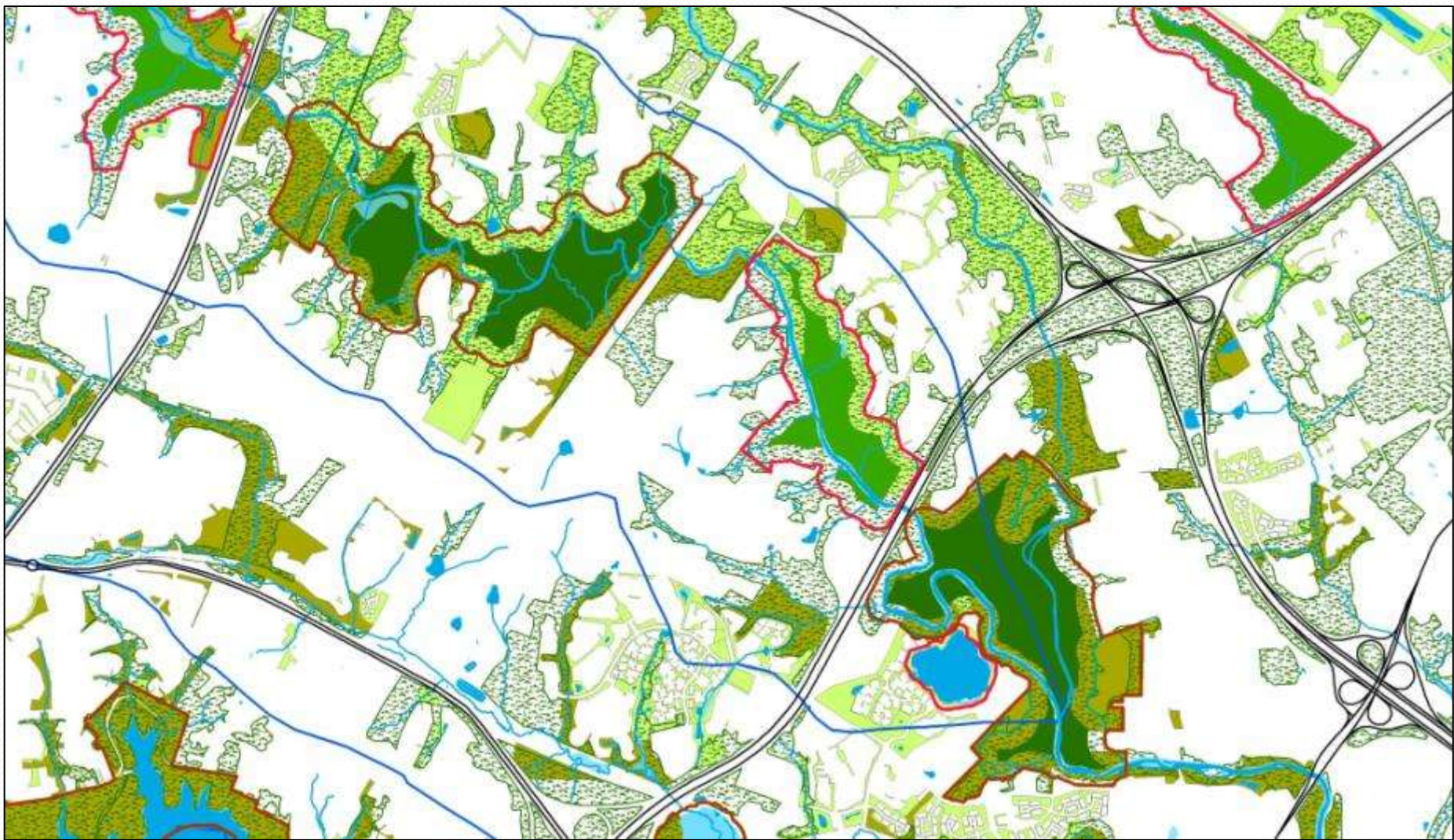
Tier One Hub Example



Forest Interior > 75 acres



Tier One Hub



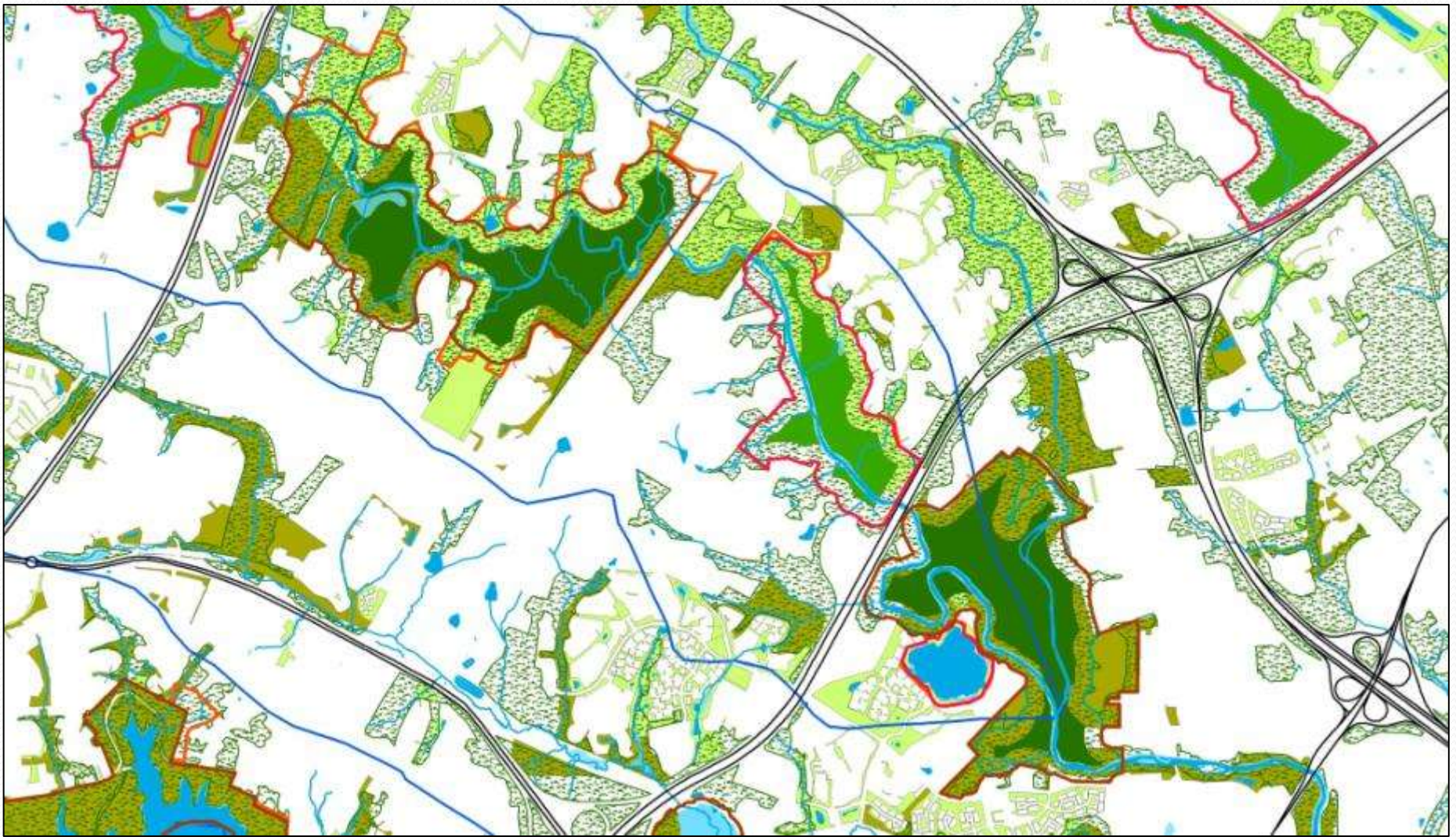
Tier Two Hub Example



Forest Interior > 50 acres



Tier Two Hub



Tier Three Hub Example

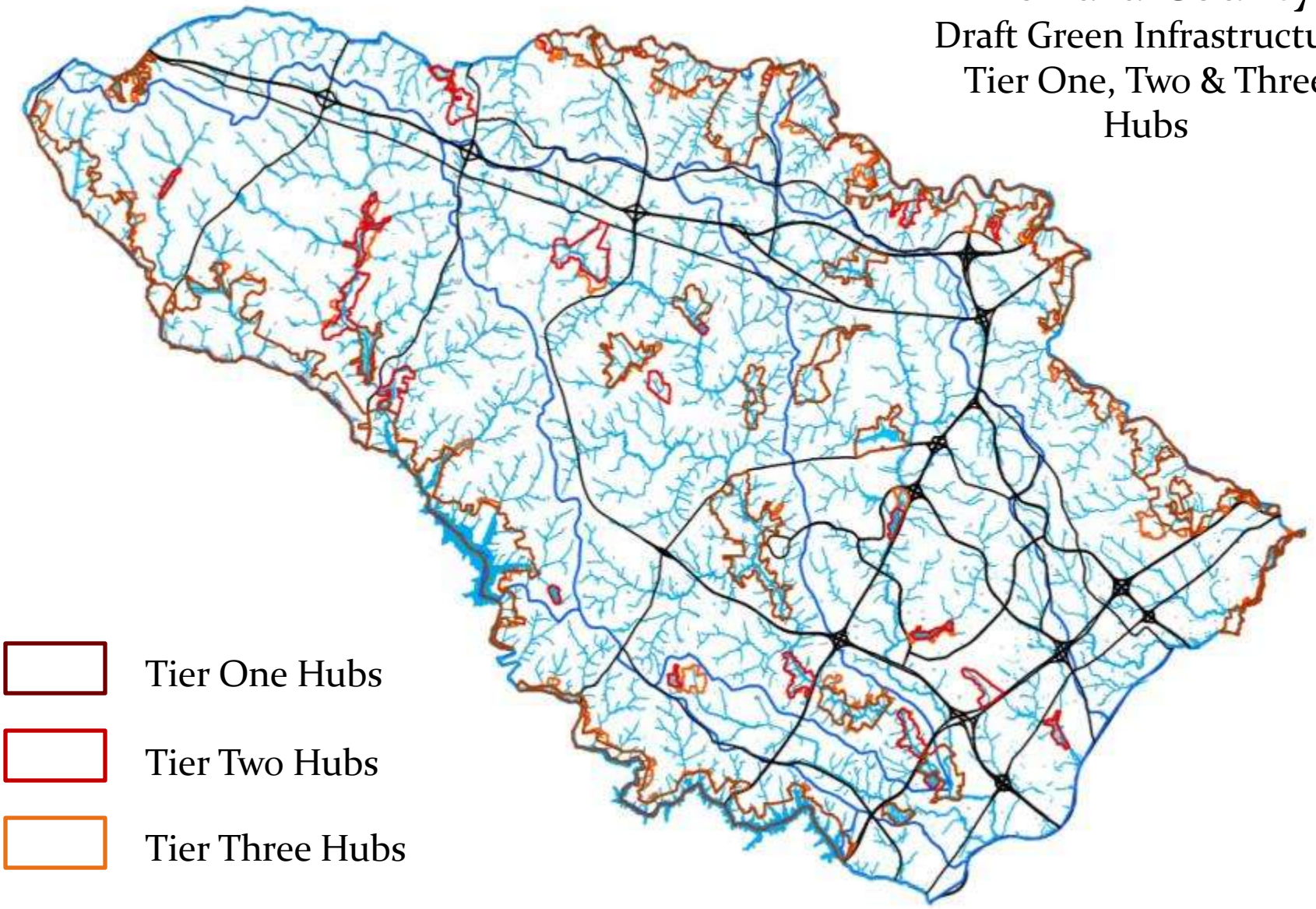





Tier Three Hub Extension

# Howard County

## Draft Green Infrastructure

### Tier One, Two & Three Hubs

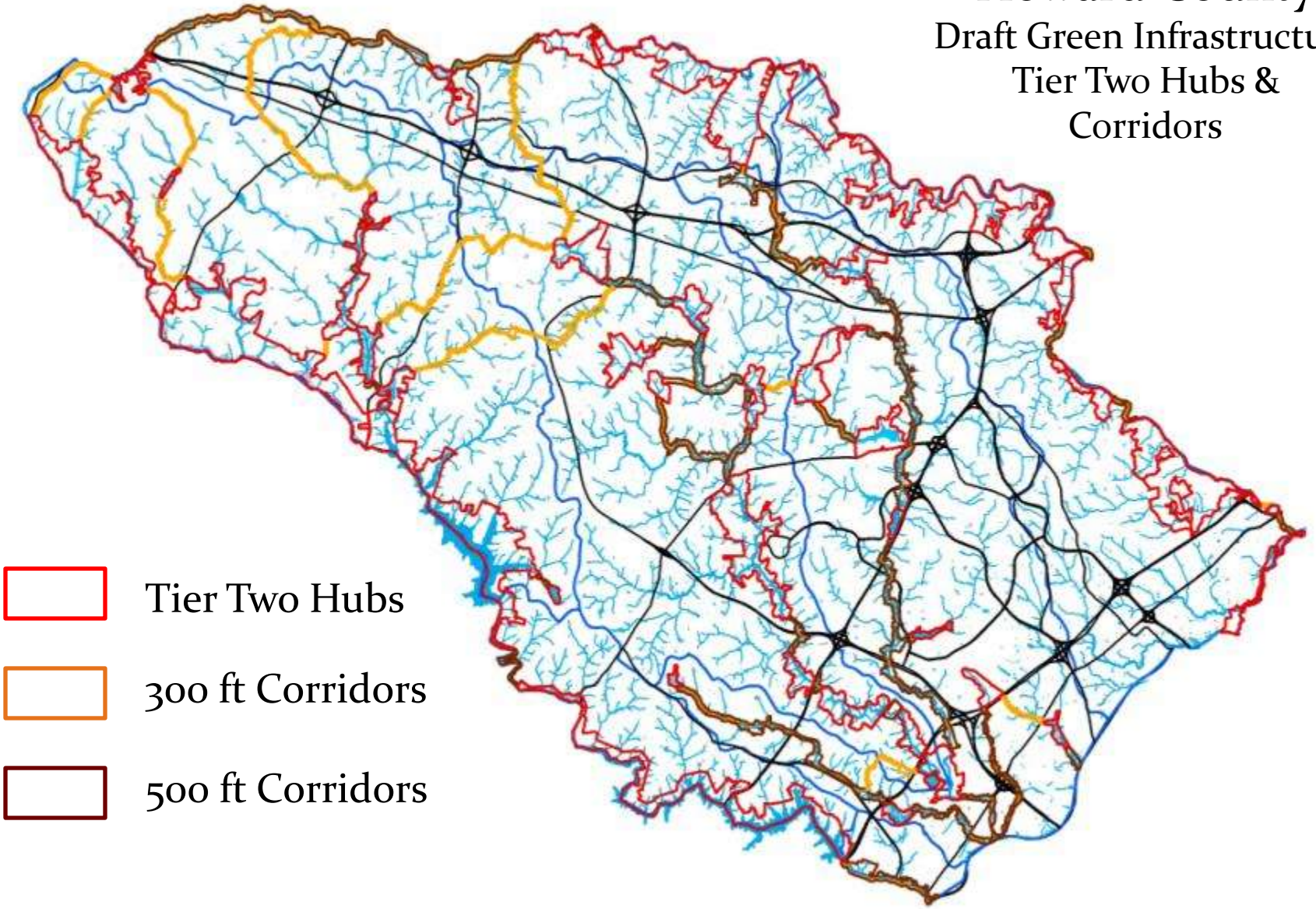





-  Tier One Hubs
-  Tier Two Hubs
-  Tier Three Hubs

# Howard County

## Draft Green Infrastructure

### Tier Two Hubs & Corridors

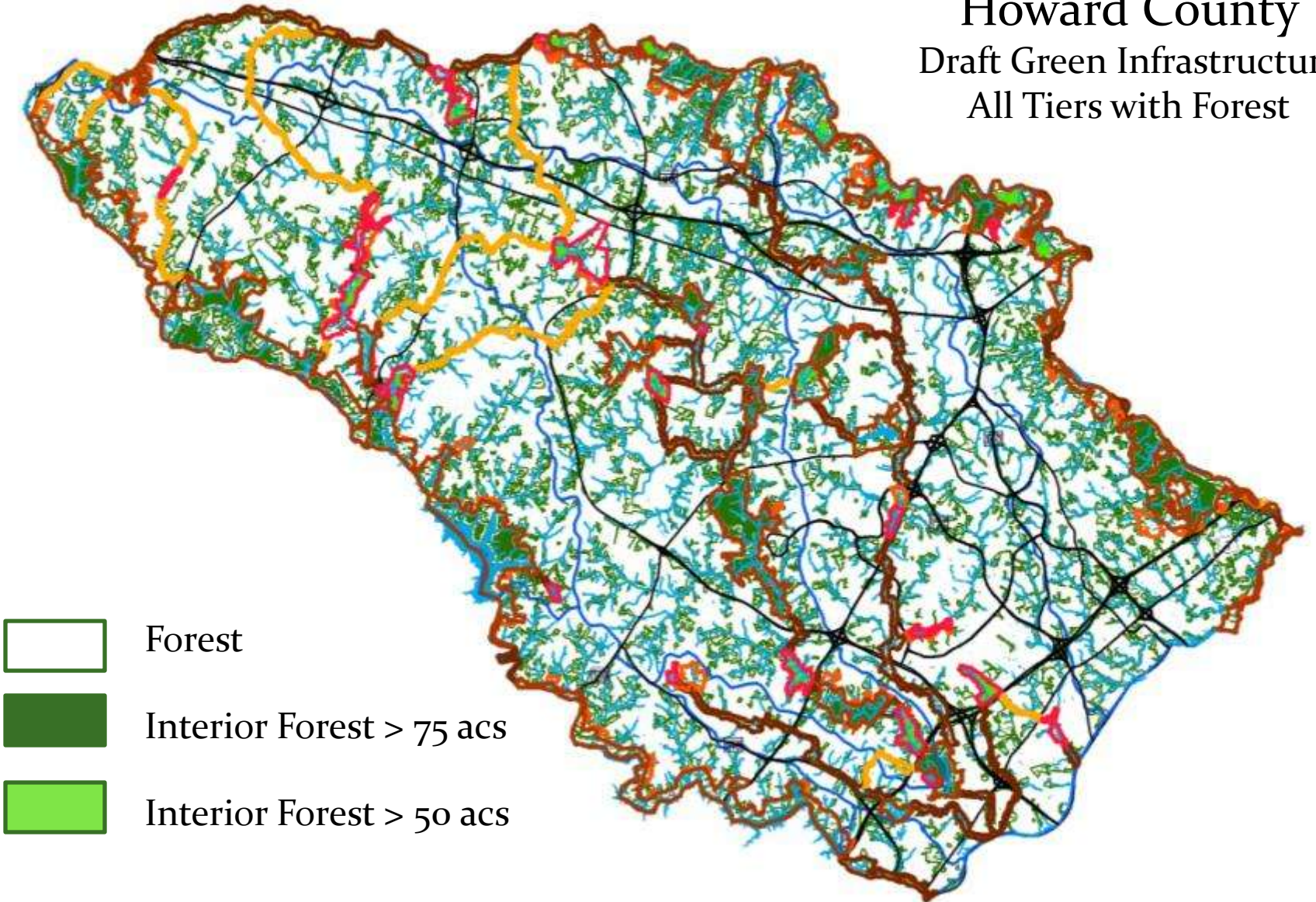


-  Tier Two Hubs
-  300 ft Corridors
-  500 ft Corridors

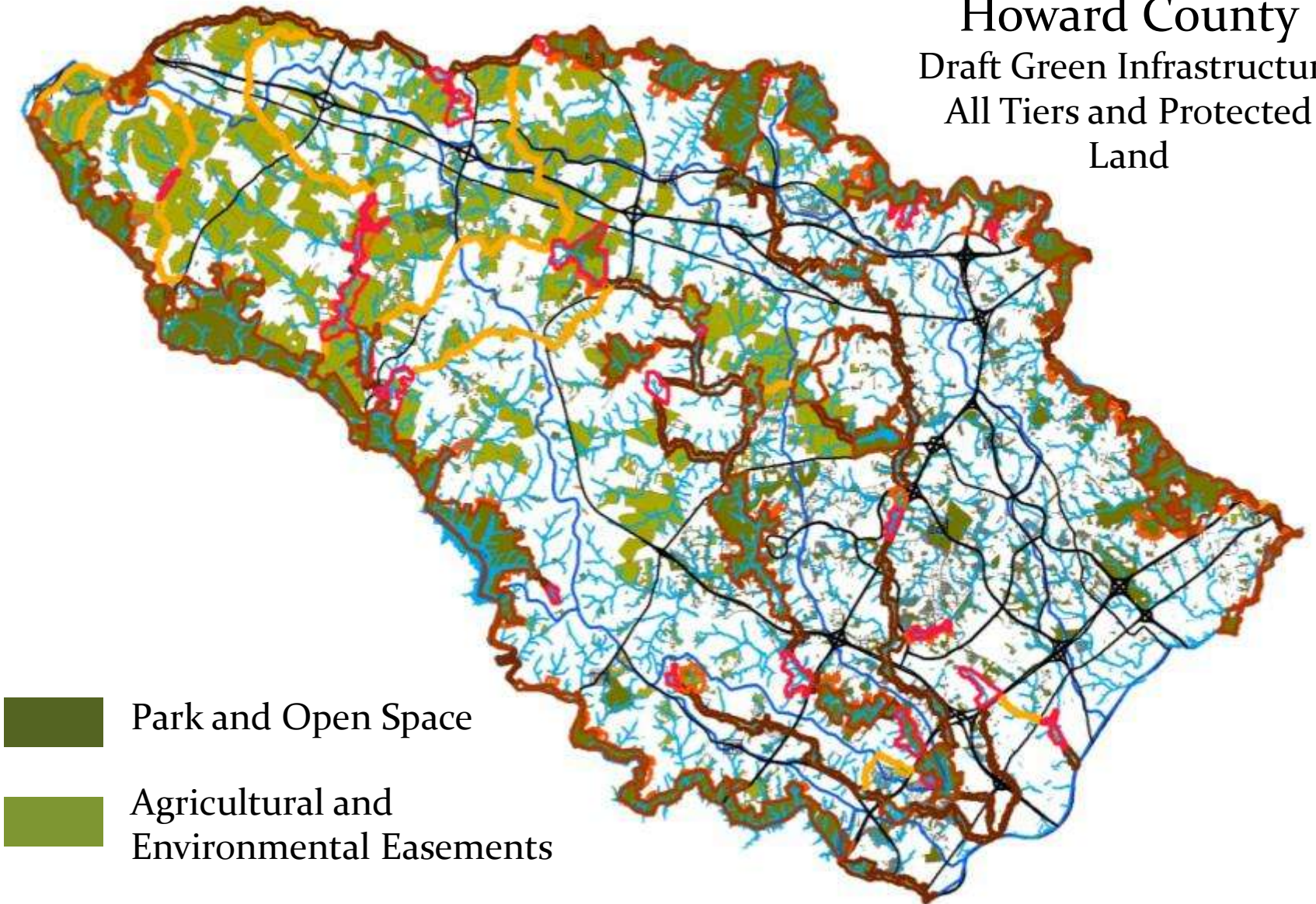
# Howard County

## Draft Green Infrastructure

### All Tiers with Forest



# Howard County Draft Green Infrastructure All Tiers and Protected Land

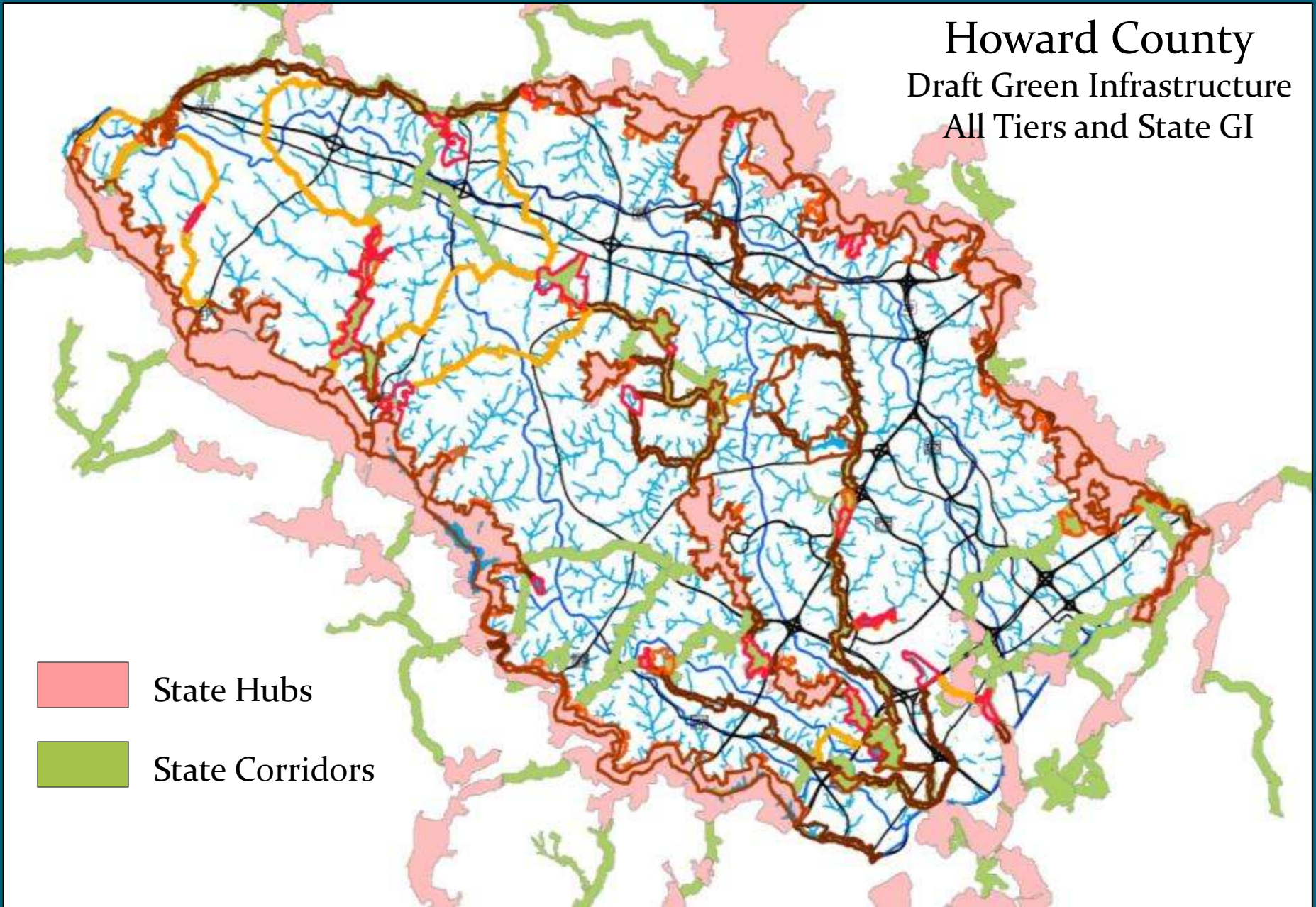


# Howard County

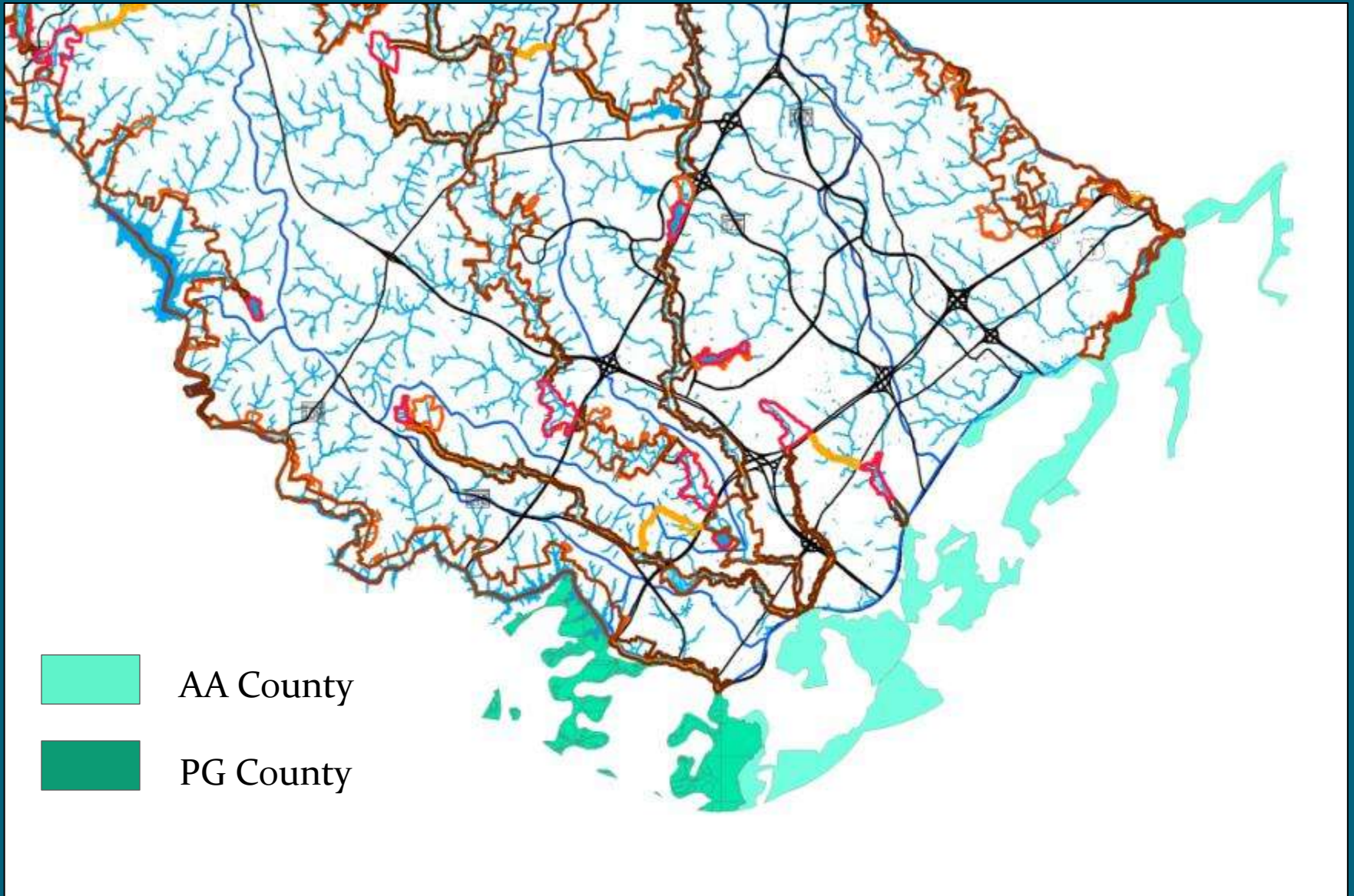
## Draft Green Infrastructure

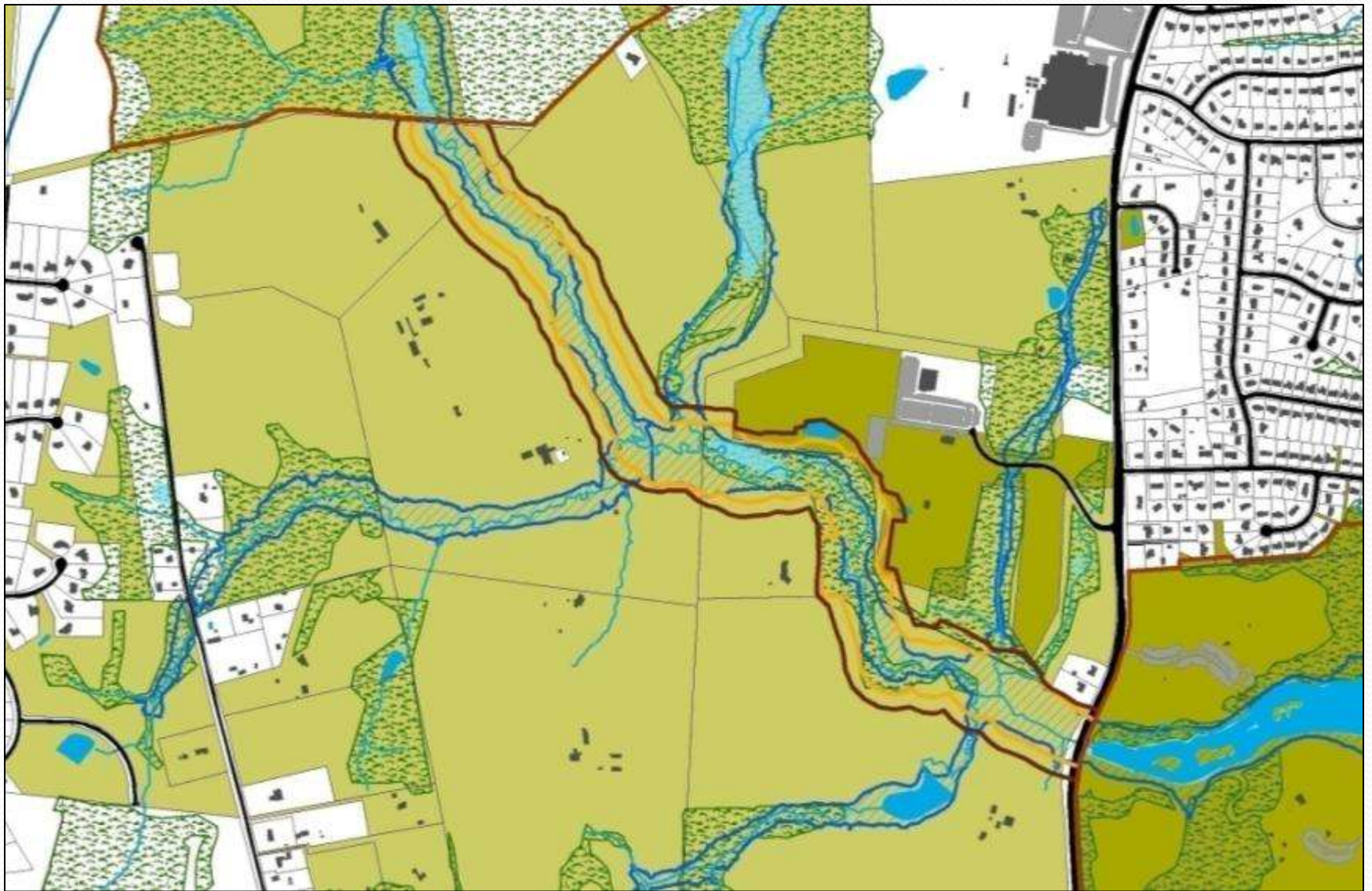
### All Tiers and State GI

-  State Hubs
-  State Corridors



# Neighboring Green Infrastructure





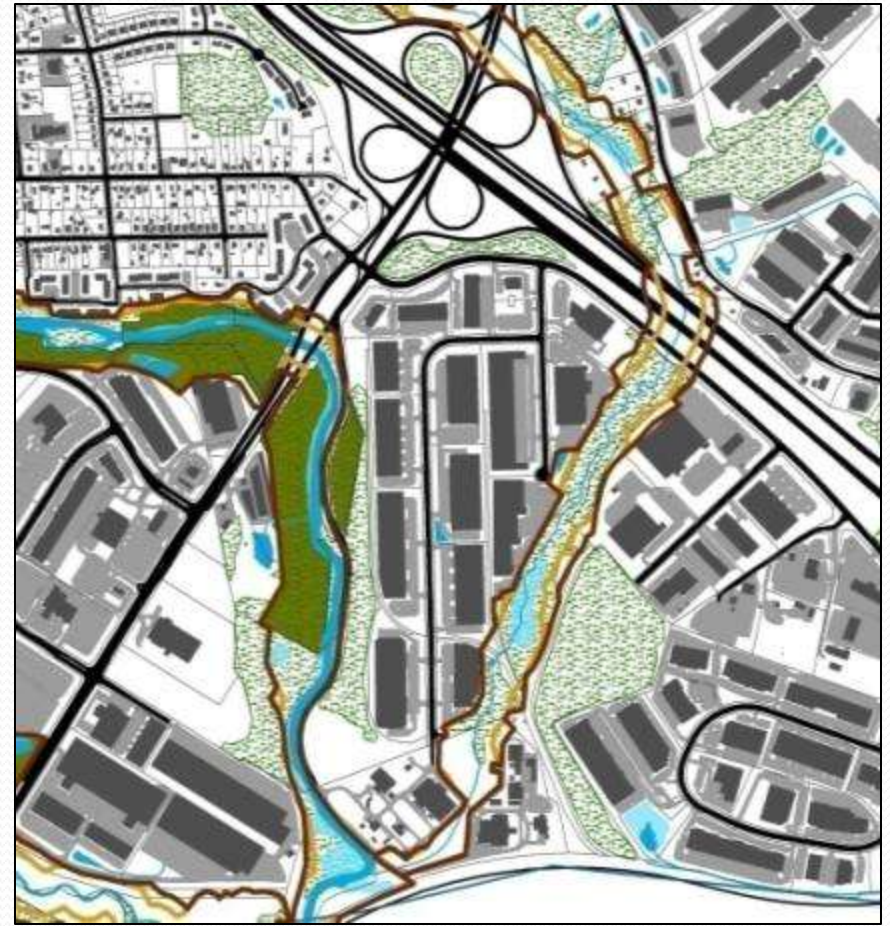
Example Corridor on  
Agricultural Easement



300 ft Corridor



500 ft Corridor



## Example Corridors in the East



300 ft Corridor



500 ft Corridor

# Potential Corridors in Rural West



# Resources and Land Use

Resource	Tier One	Tier Two	Tier Three	Corridors
County land	11%	13%	14%	3%
Forest Interior	52%	59%	65%	6%
Forest Int > 50	86%	100%	100%	
Wetlands	40%	49%	50%	15%
Wetlands > 25	71%	90%	91%	
RTE Habitat	25 of 31	26 of 31	26 of 31	

Land Use	Tier One	Tier Two	Tier Three	Corridors
Park and OS	86%	80%	75%	32%
Uncommitted	4%	5%	6%	9%

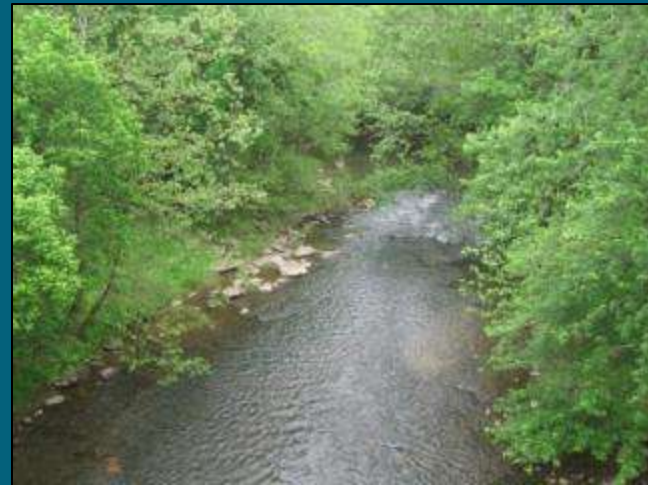
# Protection and Enhancement Tools

- Stewardship – applicable to all properties
- Financial Incentives – tax credits for best management practices
- Regulatory Protections – increased stream and wetland buffers, forest conservation on-site
- Easements – protect the resource but allow land to remain in private ownership
- Acquisition – ensures public management of the resource

# Next Steps

- Select the preferred option for the hub and corridor system and finalize the network map
- Select and implement appropriate protection and enhancement tools

Photo Courtesy Sue Muller



# For more information:

- Green Central Station:  
<http://livegreenhoward.com/land/green-infrastructure/>
- Susan Overstreet and Lindsay DeMarzo, Howard County Department of Planning and Zoning, Resource Conservation Division, 410-313-2350
- [GreenInfrastructure@howardcountymd.gov](mailto:GreenInfrastructure@howardcountymd.gov)